

Client: NOVERA COMPOUNDS LLC
 procurement@noveracompounds

 Sample received: **03/28/26**
 Analysis conducted: **03/28/26**

Compound:	PT-141	CAS:	189691-06-3
Batch/Lot #:	395407	Formula:	C50H68N14O10
Appearance:	White lyophilized powder	Mol Wt:	1025.182 g/mol

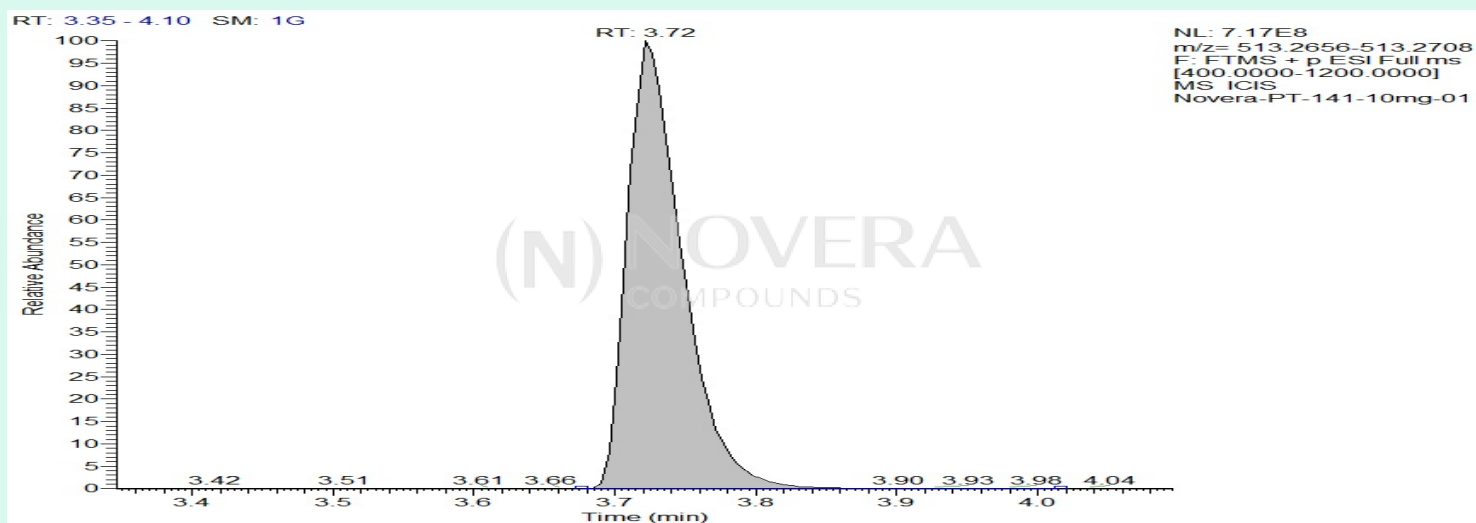
Method: Qualitative and Quantitative chemical analysis by Ultra High Performance Liquid Chromatography with Mass Spectrometry

Pubchem CID: 9941379

PT-141 | C50H68N14O10 | CID 9941379

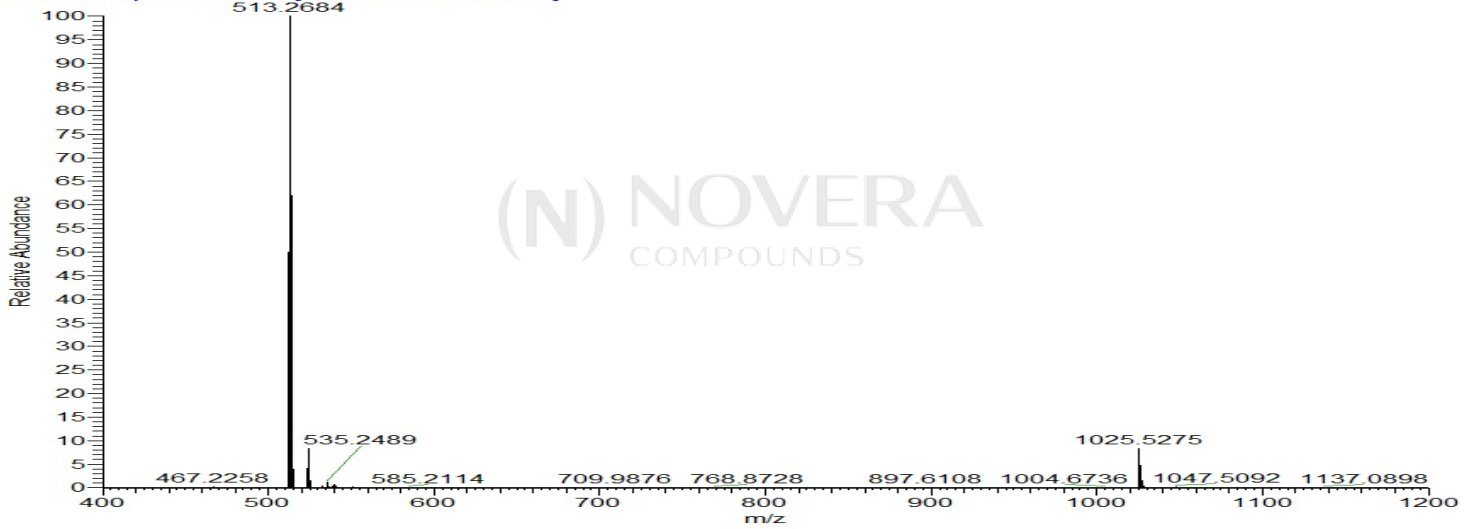
	Specification	Result	
Identity Test:	PT-141	PT-141	Conforms
Quantity:	10 mg	12.07 mg	Over-Conforming
Purity:	>99%	99.51%	Conforms

LC-MS Chromatogram: Retention Time and Peak Analysis

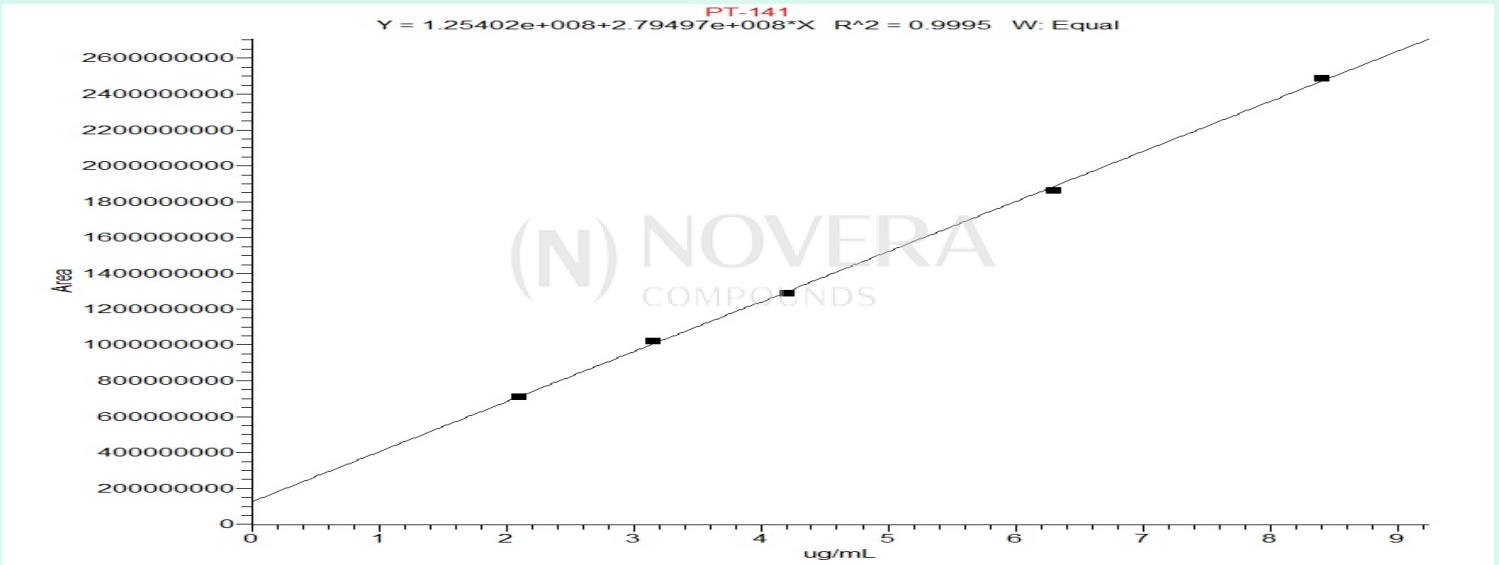


Full Scan Mass Spectrometry Analysis

Novera-PT-141-10mg-01 #450 RT: 3.72 AV: 1 NL: 6.83E8
T: FTMS + p ESI Full ms [400.0000-1200.0000]



Calibration Curve



Analysis Performed by
Dr. Victor Ugur
Analytical Chemist
contact@bioregen.com

COA #12629
Security Key **NOVCOMP01**
bioregen.com/verify



Victor Ugur