

Client: NOVERA COMPOUNDS LLC
 procurement@noveracomounds

 Sample received: **04/16/26**
 Analysis conducted: **04/16/26**

Compound:	GLOW	CAS:	137525-51-0
Batch/Lot #:	395410	Formula:	C62H98N16O22
Appearance:	White lyophilized powder	Mol Wt:	1419.5 g/mol

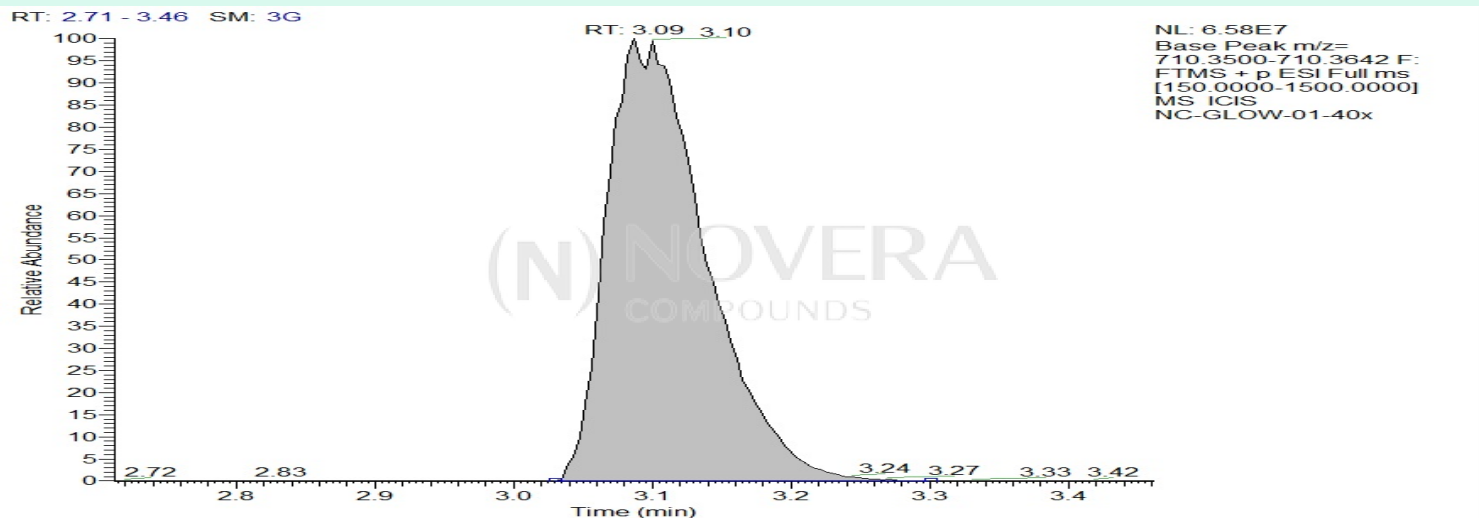
Method: Qualitative and Quantitative chemical analysis by Ultra High Performance Liquid Chromatography with Mass Spectrometry

Pubchem CID: 9941957

[BPC 157](#) | [C62H98N16O22](#) | [CID 9941957 - PubChem](#)

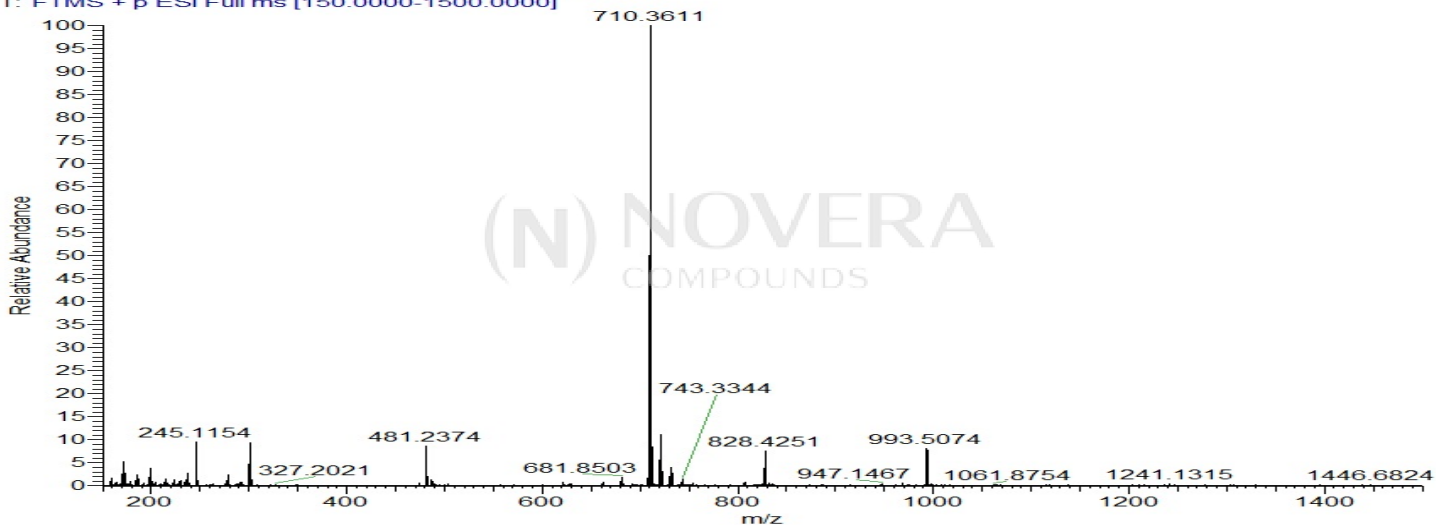
	Specification	Result	
Identity Test:	BPC 157	BPC 157	Conforms
Quantity:	10 mg	11.2 mg	Conforms
Purity:	>99%	99.62%	Conforms

LC-MS Chromatogram and Retention Time Analysis

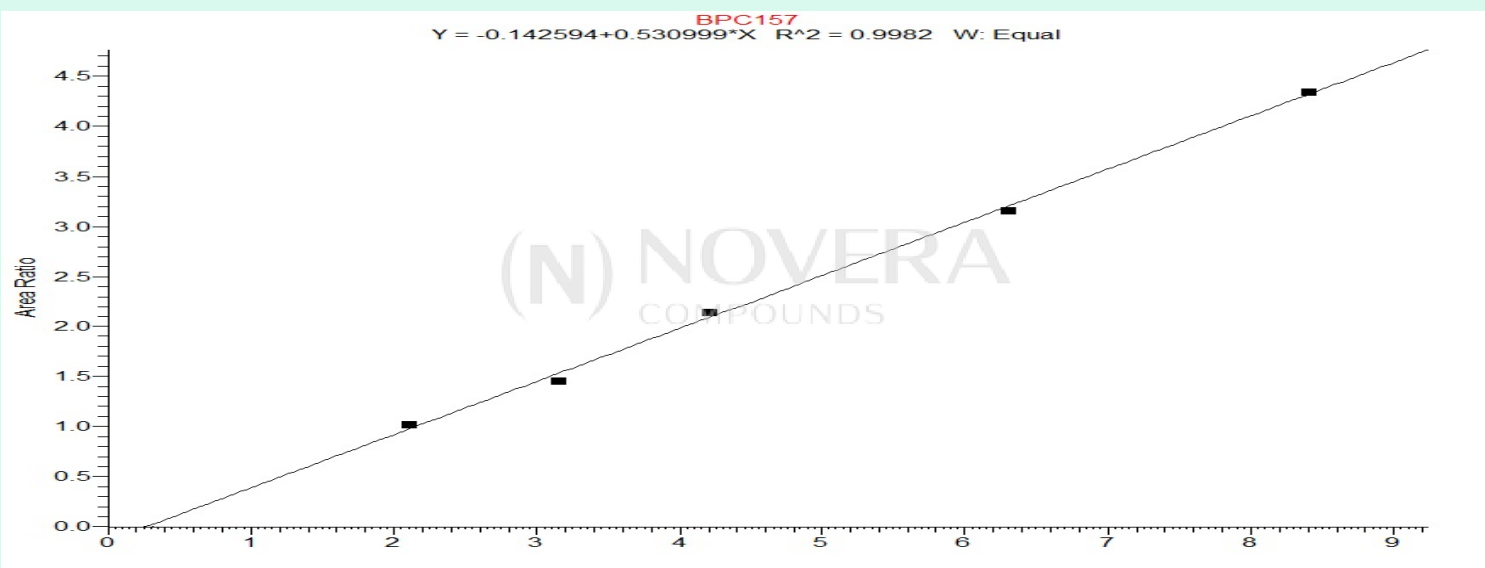


Full Scan Mass Spectrometry Analysis

NC-GLOW-01-40x #708 RT: 3.09 AV: 1 NL: 6.60E7
T: FTMS + p ESI Full ms [150.0000-1500.0000]



Calibration Curve



Analysis Performed by
Dr. Victor Ugur
Analytical Chemist
contact@bioregen.com

COA #12834
Security Key **NOVCOMP01**
bioregen.com/verify



Victor Ugur

Client: NOVERA COMPOUNDS LLC
 procurement@noveracompounds

 Sample received: **04/16/26**
 Analysis conducted: **04/16/26**

Compound:	GLOW	CAS:	49557-75-7
Batch/Lot #:	395410	Formula:	C14H24N6O4
Appearance:	Blue lyophilized powder	Mol Wt:	340.38 g/mol

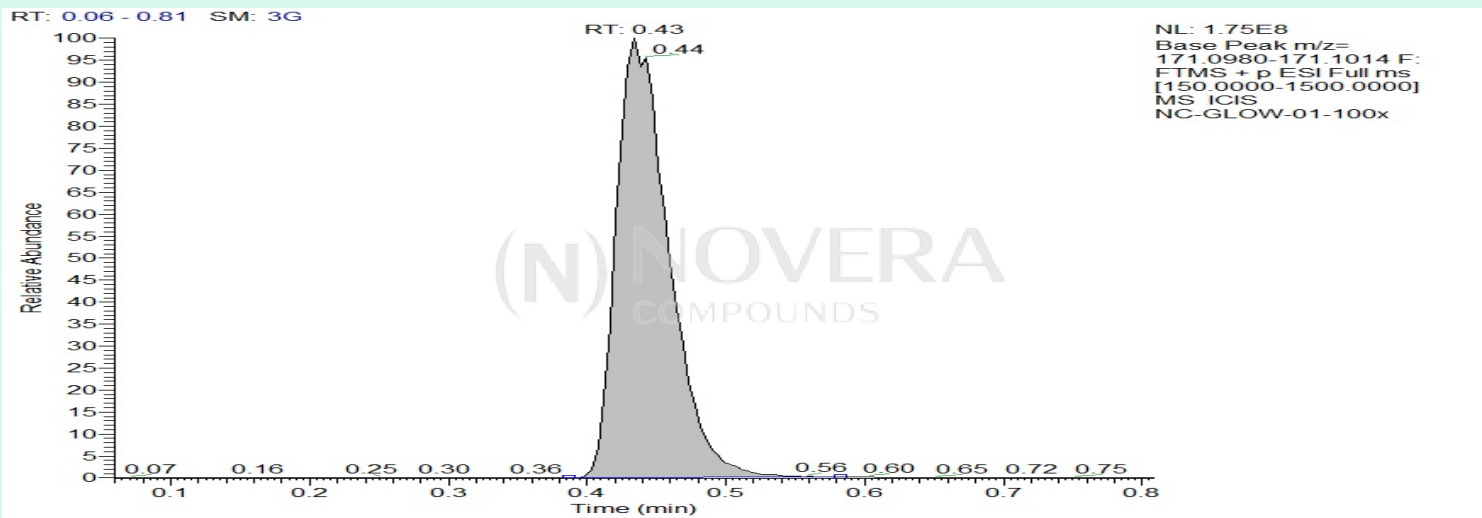
Method: Qualitative and Quantitative chemical analysis by Ultra High Performance Liquid Chromatography with Mass Spectrometry

Pubchem CID: 73587

GHK-Cu | C14H24N6O4 | CID 73587

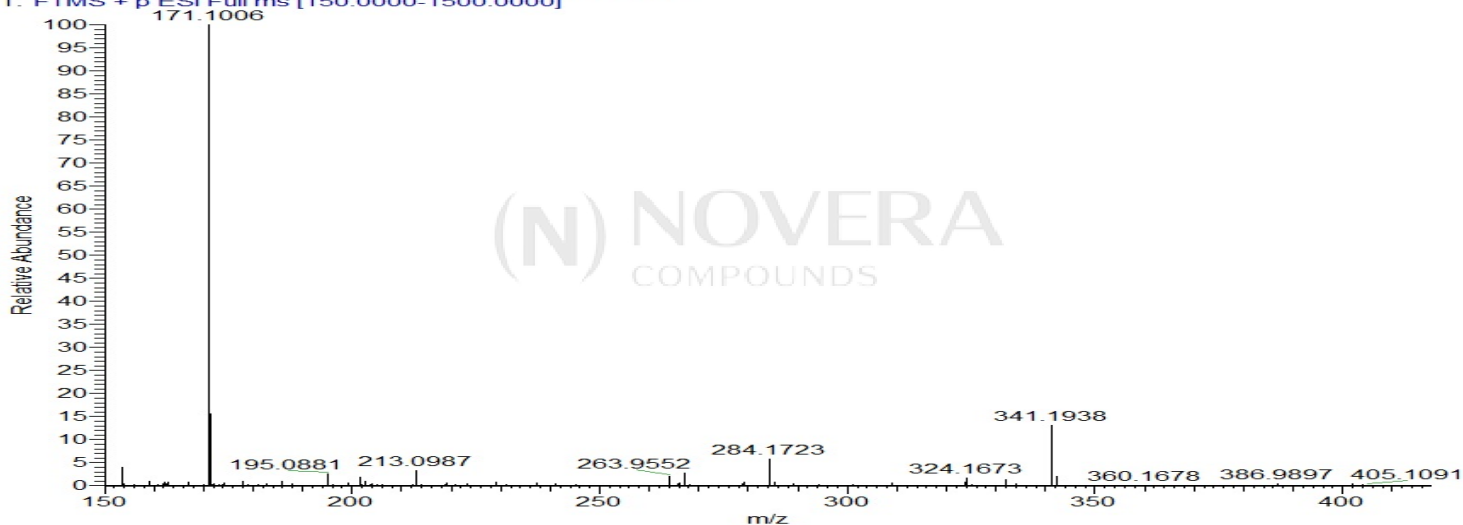
	Specification	Result	
Identity Test:	GHK-Cu	GHK-Cu	Conforms
Quantity:	27 mg	52.4 mg	Over-Conforming
Purity:	>99%	99.51%	Conforms

LC-MS Chromatogram: Retention Time and Peak Analysis

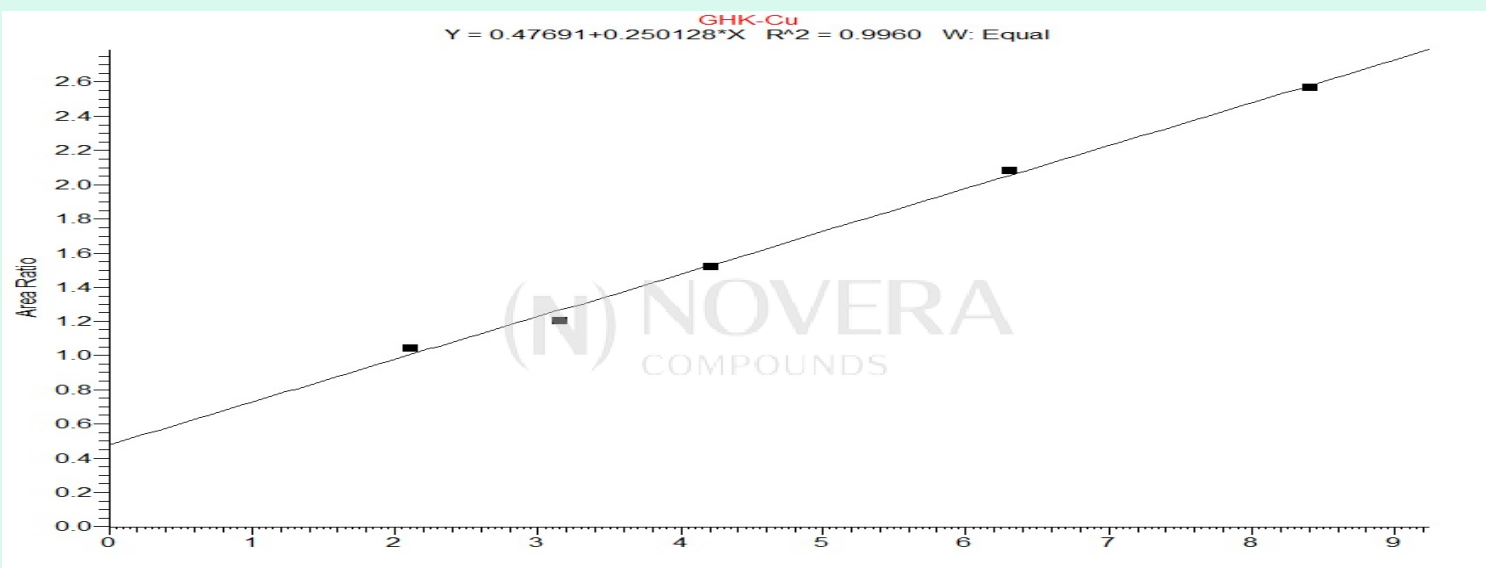


Full Scan Mass Spectrometry Analysis

NC-GLOW-01-100x #100 RT: 0.43 AV: 1 NL: 1.69E8
T: FTMS + p ESI Full ms [150.0000-1500.0000]



Calibration Curve



Analysis Performed by

Dr. Victor Ugur
Analytical Chemist
contact@bioregen.com

COA #12834
Security Key **NOVCOMP01**
bioregen.com/verify



Victor Ugur

Client: NOVERA COMPOUNDS LLC
procurement@noveracomounds

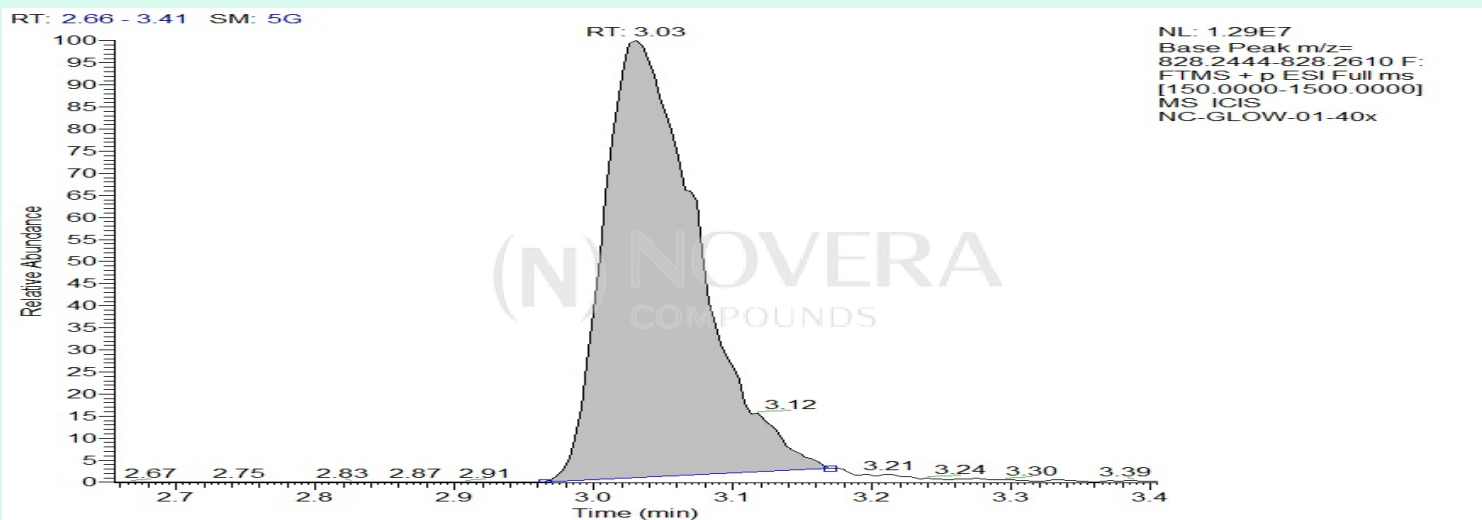
Sample received: **04/16/26**
Analysis conducted: **04/16/26**

Compound:	GLOW	CAS:	885340-08-9
Batch/Lot #:	395410	Formula:	C38H68N10O14
Appearance:	white lyophilized powder	Mol Wt:	889.0 g/mol

Method: Qualitative and Quantitative chemical analysis by Ultra High Performance Liquid Chromatography with Mass Spectrometry
Pubchem CID: 62707662
TB-500 | C38H68N10O14 | CID 62707662

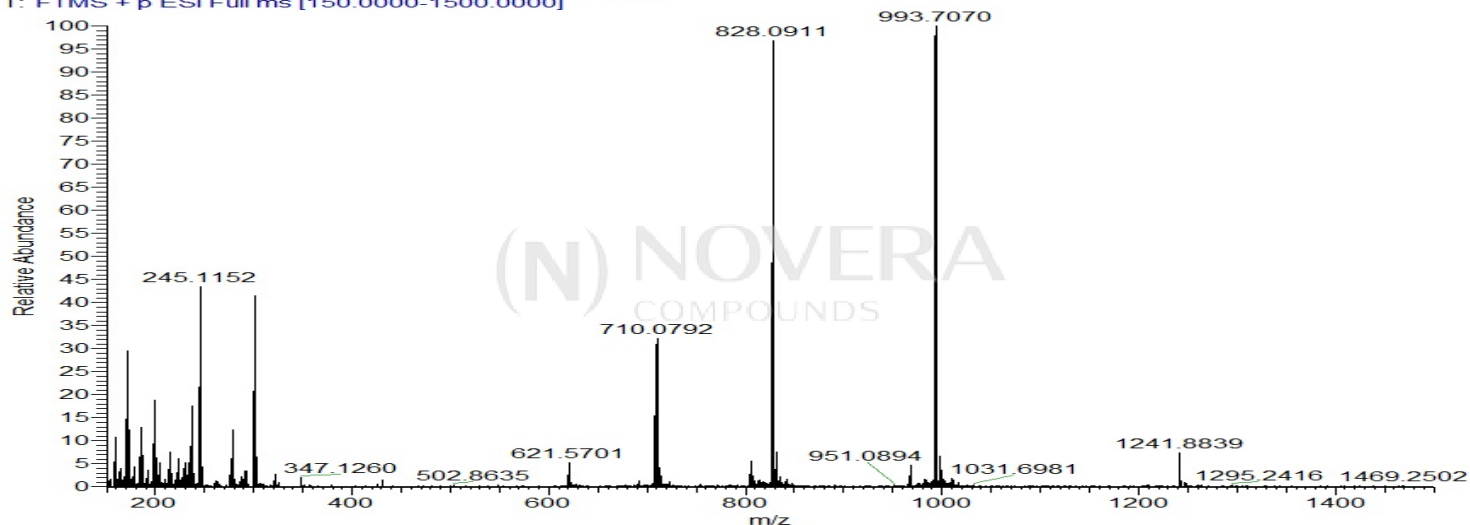
	Specification	Result	
Identity Test:	TB500	TB500 (TB4)	Conforms
Quantity:	10 mg	10.9 mg	Conforms
Purity:	>99%	99.42%	Conforms

LC-MS Chromatogram: Retention Time and Peak Analysis

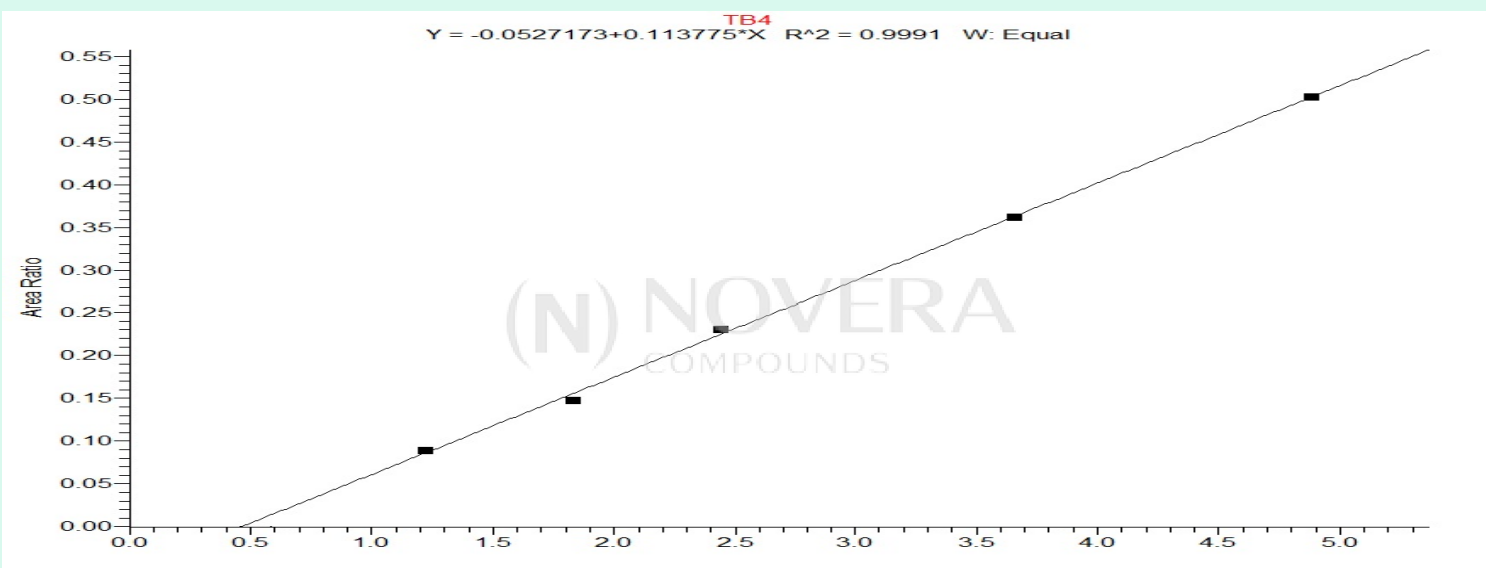


Full Scan Mass Spectrometry Analysis

NC-GLOW-01-40x#695 RT: 3.03 AV: 1 NL: 1.33E7
T: FTMS + p ESI Full ms [150.0000-1500.0000]



Calibration Curve



Analysis Performed by
Dr. Victor Ugur
Analytical Chemist
contact@bioregen.com

COA #12834
Security Key **NOVCOMP01**
bioregen.com/verify



Victor Ugur