

**Client: NOVERA COMPOUNDS LLC**  
 procurement@noveracompounds

 Sample received: **04/13/26**  
 Analysis conducted: **04/20/26**

Compound:	IGF-1 LR3	CAS:	143045-27-6
Batch/Lot #:	IGFR12172025-J	Formula:	C400H625N1110I115S9
Appearance:	White lyophilized powder	Mol Wt:	9117.5 g/mol

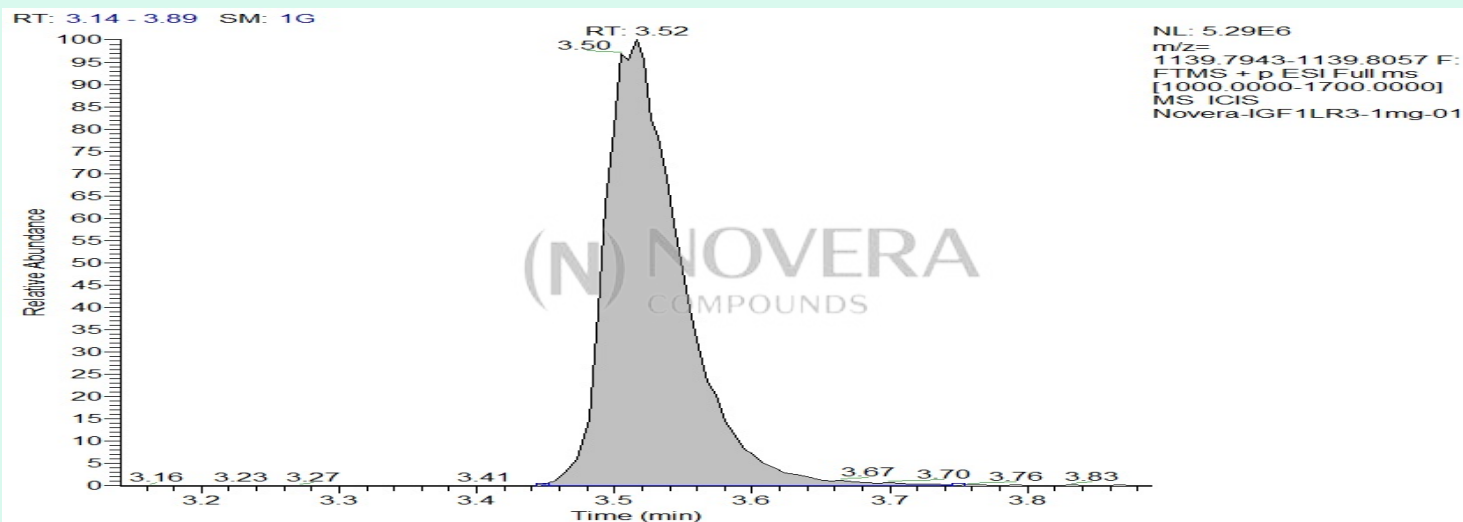
**Method:** Qualitative and Quantitative chemical analysis by Ultra High Performance Liquid Chromatography with Mass Spectrometry

**Pubchem CID:** 381123731

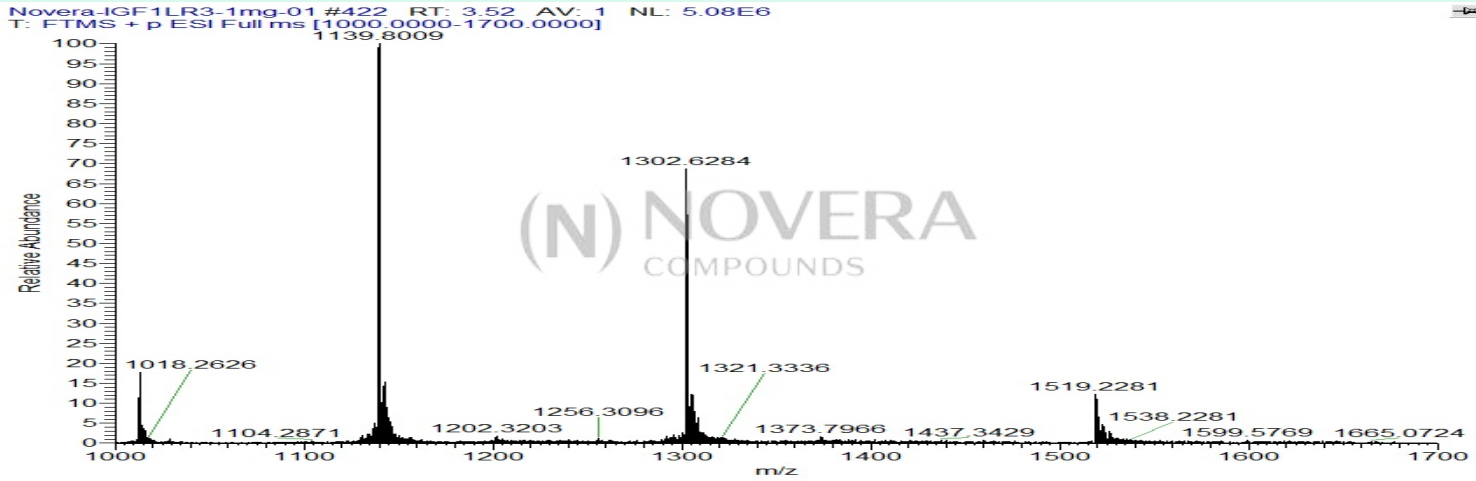
IGF-1 LR3 | C400H625N1110I115S9 | CID 381123731

	Specification	Result	
Identity Test:	IGF-1 LR3	<b>IGF-1 LR3</b>	<b>Conforms</b>
Quantity:	1 mg	0.61 mg	<b>Under-Conforming</b>
Purity:	>99%	<b>99.27%</b>	<b>Conforms</b>

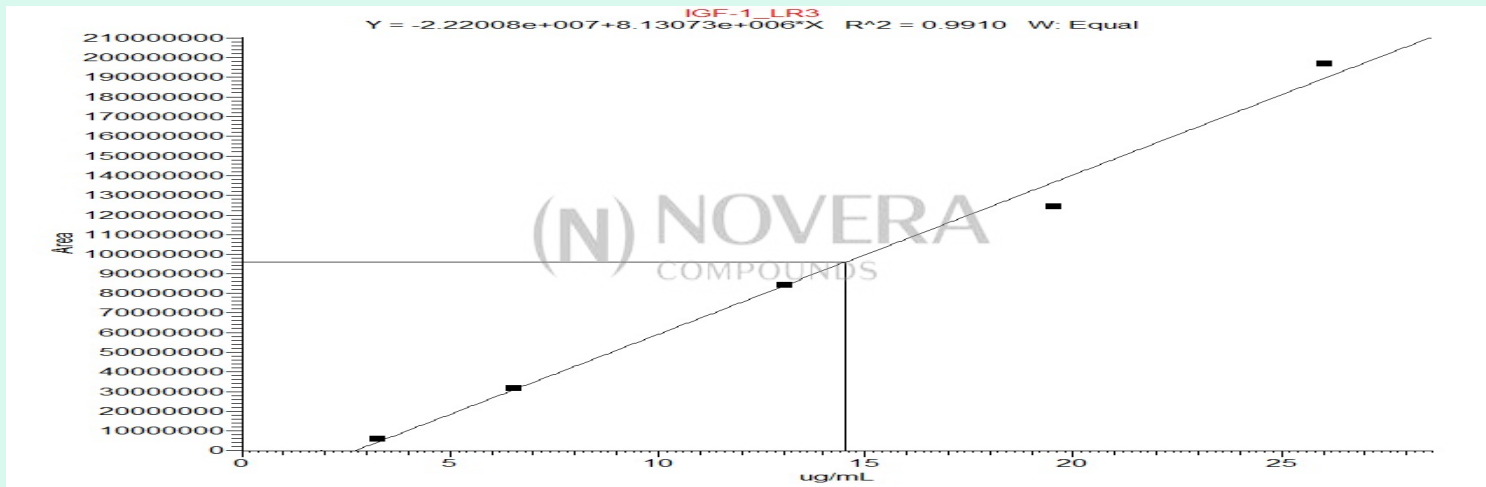
### LC-MS Chromatogram: Retention Time and Peak Analysis



# Full Scan Mass Spectrometry Analysis



## Calibration Curve



### Analysis Performed by

Dr. Roberto Marin  
Analytical Chemist  
contact@bioregen.com

COA #12863  
Security Key **NOVCOMP01**  
bioregen.com/verify

*Roberto Marin*

