

Client: NOVERA COMPOUNDS LLC
 procurement@noveracompounds

 Sample received: **02/09/26**
 Analysis conducted: **02/13/26**

Compound:	Semaglutide	CAS:	910463-68-2
Batch/Lot #:	395520	Formula:	C187H291N45O59
Appearance:	White lyophilized powder	Mol Wt:	4113.641 g/mol

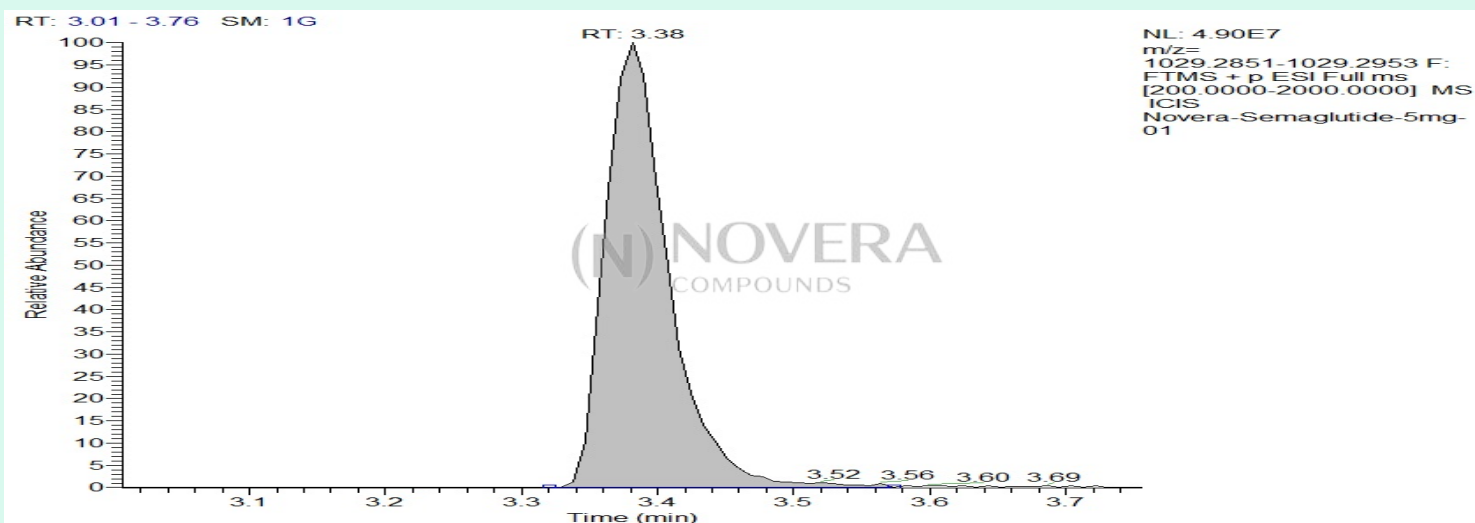
Method: Qualitative and Quantitative chemical analysis by Ultra High Performance Liquid Chromatography with Mass Spectrometry

Pubchem CID: 56843331

[Semaglutide | C187H291N45O59 | CID 56843331](#)

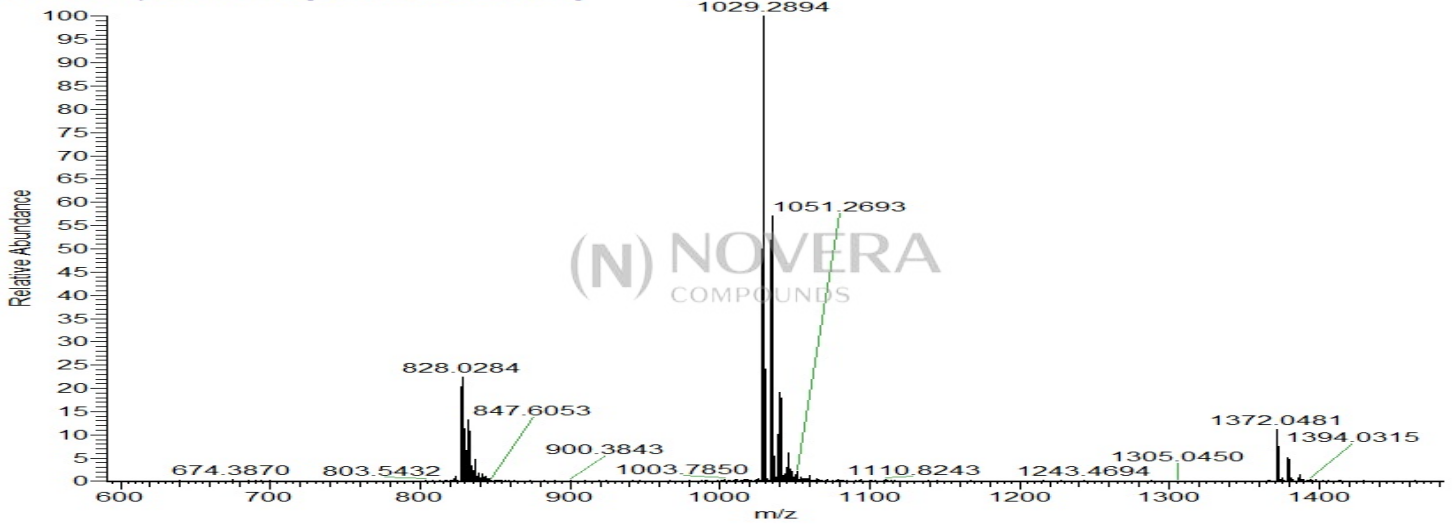
	Specification	Result	
Identity Test:	Semaglutide	Semaglutide	Conforms
Quantity:	5 mg	6.8 mg	Over-Conforming
Purity:	>99%	99.73%	Conforms

LC-MS Chromatogram: Retention Time and Peak Analysis

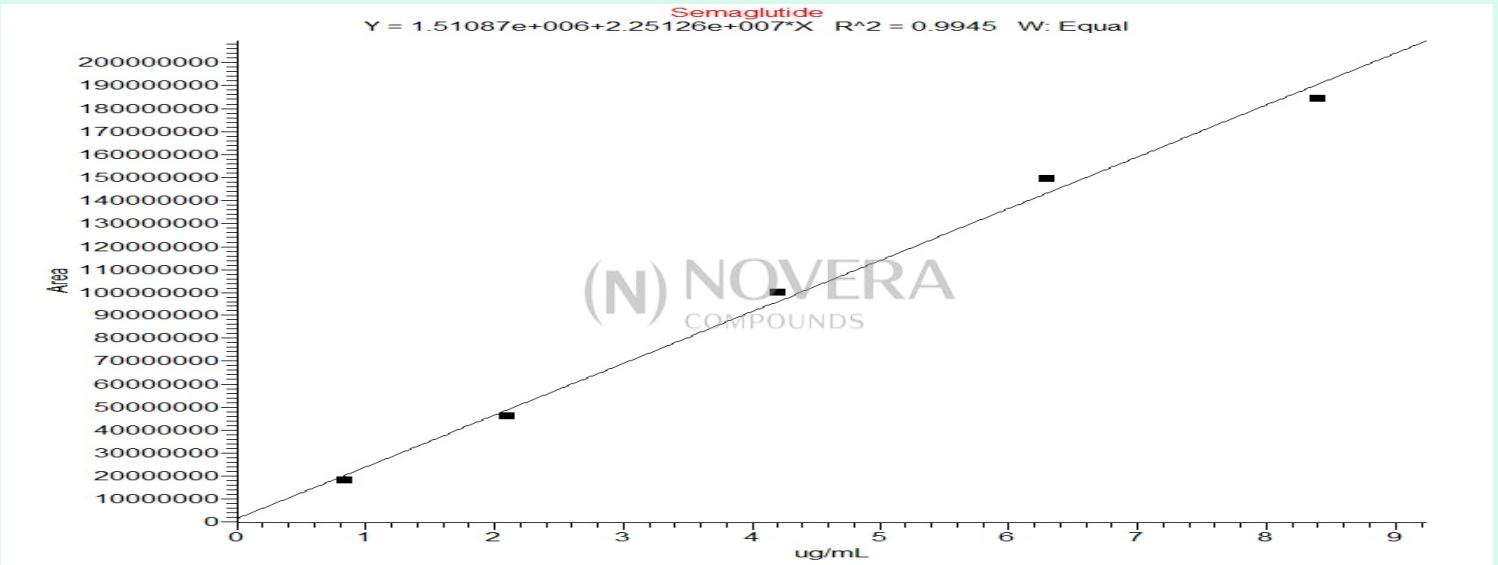


Full Scan Mass Spectrometry Analysis

Novera-Semaglutide-5mg-01 #388 RT: 3.38 AV: 1 NL: 4.85E7
T: FTMS + p ESI Full ms [200.0000-2000.0000]



Calibration Curve



Analysis Performed by

Dr. Roberto Marin
Analytical Chemist
contact@bioregen.com

COA #12222
Security Key **NOVCOMP01**
bioregen.com/verify



Roberto Marin